

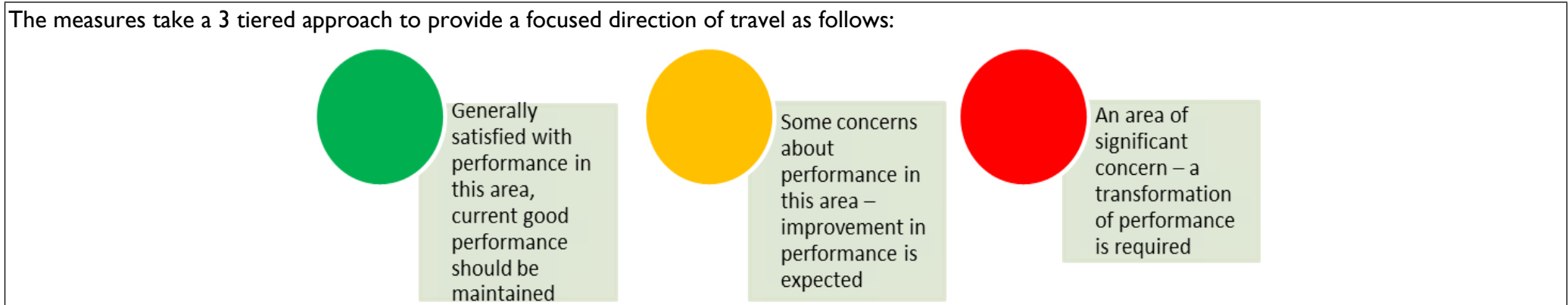
# PERFORMANCE REPORT Safer Plymouth Partnership Thursday 28 May 2015



## LIST OF CONTENTS:

1. Exception Items
2. Current iQuanta Family Group Position
3. Performance Measures:
  - Closing the Gap in overall crime
  - Reduce Violence with Injury (excl DA)
  - Increase reporting of Domestic Abuse
  - Reduce Anti-Social behaviour
  - Reduce Serious Acquisitive crime (monitoring levels only)
  - Increase number of vulnerable victims of ASB supported by the ASB Victim Champion Service
  - % Satisfaction rate of those who engaged with the ASB Victim Champion Service
  - Increase number of racist, disablist, homophobic and faith incidents reported
  - Increase the % satisfied with outcome of reported racist, disablist, homophobic, faith & belief incidents
4. Performance on Strategic Assessment Recommendations

To demonstrate how we are performing, we have now adopted the Police and Crime Commissioner’s performance framework as illustrated below:



## 1. EXCEPTION ITEMS:

### **KEY RISKS AND PERFORMANCE ISSUES, BY EXCEPTION, INCLUDING ANY HIGHLIGHTED BY CHAIRS OF DELIVERY GROUPS**

#### **Closing the gap in overall crime between the 10 neighbourhoods with the highest crime rates and the city average per 1,000 population**

##### **SOME CONCERNS ABOUT PERFORMANCE IN THIS AREA: (within 15% of performance measures) - (2014/15 performance measure - "gap of not more than 76.2")**

- For the period 2014/15 we have seen an overall reduction of 0.5% (-85 crimes) in overall crime recorded compared to the same period last year.
- At the end of the year the difference between the gap and target stay the same and therefore is amber. At the end of March the gap was 77.40 against a target gap of 76.2.

#### **Reduce Violence with Injury (excl DA)**

##### **SOME CONCERNS ABOUT PERFORMANCE IN THIS AREA: (within 15% of performance measure) - (2014/15 performance measure - not more than 1705 crimes)**

- For the period 2014/15 we have seen an overall increase of 9% (+160 crimes) in Violence with Injury (excluding DA). This represents no change in the position at the end of quarter 3, when we were also recording a 9% increase.

#### **Increase Reporting of Domestic Violence (Crimes and Incidents)**

##### **SOME CONCERNS ABOUT PERFORMANCE IN THIS AREA: (within 15% of performance measure) - (2014/15 performance measure - record more than 7102 crimes)**

- For the period 2014/15 we have seen an overall reduction of 7% (-515) in overall crime/ incidents recorded compared to the same period last year. The number of DA related Crimes increased by 1.8% but the overall reduction is driven by a reduction in the number of non-crime incidents of 12%.

#### **Reduce the rate of Anti-Social Behaviour incidents**

##### **GENERALLY SATISFIED WITH PERFORMANCE - (2014/15 performance measure of not more than 10,298 Incidents)**

- For the period 2014/15 we have seen a reduction of 2% (-235) compared to the same period last year.
- Levels of ASB continued to fall in January and February but increased in March, which follows an expected seasonal trend.

#### **Reduce Serious Acquisitive Crime – MONITORING ONLY**

##### **SOME CONCERNS ABOUT PERFORMANCE IN THIS AREA**

- For the period 2014/15 we have seen an increase of 2.9% (+56) compared to the same period last year.
- The change to an increase is driven by very low crimes between September and March last year, reductions that we are not recording in 2014/15.

**Increase the number of vulnerable victims of ASB supported by the ASB Victim Champion Service (target 300)**

**GENERALLY SATISFIED WITH PERFORMANCE - (2014/15 performance measure of 300 vulnerable victims seen)**

- In 2014/15 314 victims of ASB have been seen by the vulnerable victim service. Therefore we achieved the annual figure of 300 which would be an increase on the number of victims seen in 2013/14. The satisfaction rate of these vulnerable victims continues at 96%.
- Numbers seen have dropped significantly since July, however the service is due to promote itself again shortly, including a PCSO refresher course.

**Satisfaction rate of those who engaged with the ASB Victim Champion Service (measure 90%)**

**GENERALLY SATISFIED WITH PERFORMANCE - (2014/15 performance measure of 90% satisfaction rate)**

- At the end of September satisfaction rate is 96% against a target of 90%. The satisfactory rates have not been reported upon since September.

**The number of racist, disablist, homophobic and faith incidents reported**

**GENERALLY SATISFIED WITH PERFORMANCE**

(Plymouth City Council performance measure) In 2014/15 we recorded 617 incidents. This means we have exceeded the target this year of 610.

**The % satisfied with outcome of reported racist, disablist, homophobic, faith & belief incidents**

**SOME CONCERNS ABOUT PERFORMANCE IN THIS AREA**

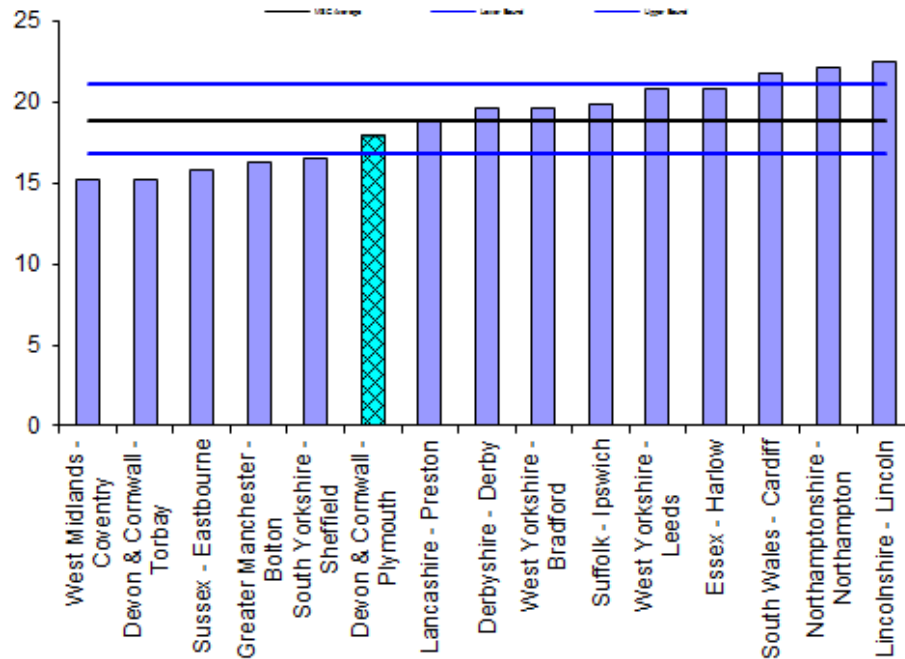
(Plymouth City Council performance measure) At the end of the year the satisfaction rate is 89%, this compares to a figure of 90% for the same period in 2013/14 and slightly misses the target of 90%.

**FINANCE & RESOURCES**

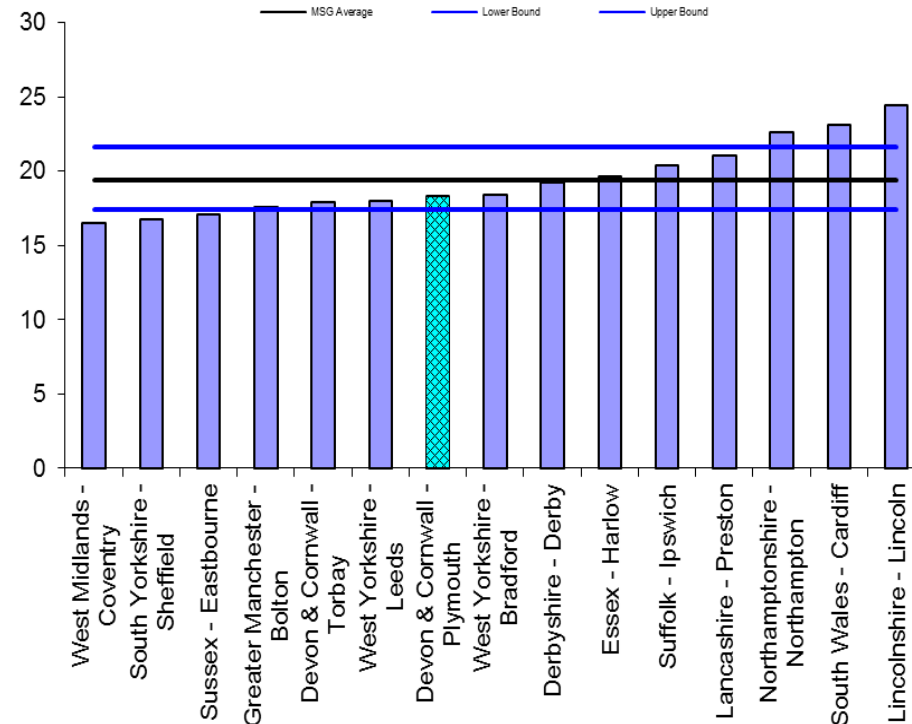
These will be items on the Agenda.

## 2. CURRENT OVERALL FAMILY GROUP POSITION:

iQuanta Barchart MSG - Crimes per 1000 Residents  
All Crime 01 January 15 – 31 March 2015



iQuanta Barchart MSG - Crimes per 1000 Residents  
All Crime 01 June 14 – 31 August 2014



The Home Office has recently reviewed its iQuanta area groupings therefore our most similar family group has changed. Plymouth's position among these new comparator CSP areas has improved. At the end of August Plymouth was placed 7<sup>th</sup> of 15, this has improved to 5<sup>th</sup> place at the end of November.

### 3. PERFORMANCE MEASURES:

#### Closing the gap in overall crime between city rate and priority neighbourhoods

**SOME CONCERNS ABOUT PERFORMANCE IN THIS AREA (within 15% of target) - (2014/15 Target gap of not more than 76.2)**

	Annual Data			2014/15 Performance											
	11/12.	12/13.	13/14.	Apr	May	Jun	Jul	Aug	Sep	Oct	Nov	Dec	Jan	Feb	Mar
Gap 2014 - 2015			76.3	6.90	13.50	19.60	26.40	32.50	39.30	45.80	52.20	58.40	64.20	70.60	77.40
Target Gap 14/15				6.35	12.7	19.05	25.4	31.75	38.1	44.45	50.8	57.15	63.5	69.85	76.2
All crime 2013 - 2014 monthly				1458	1671	1628	1707	1712	1561	1533	1490	1501	1454	1482	1710
All Crime Culmative 2013 - 2014				1458	3129	4757	6464	8176	9737	11270	12760	14261	15715	17197	18907
All crime 2014 - 2015 monthly	21081	18,713	18,953	1612	1546	1628	1583	1507	1549	1566	1554	1618	1486	1493	1680
All Crime Culmative 2014 - 2015	21081	18,713	18,953	1612	3158	4786	6369	7876	9425	10991	12545	14163	15649	17142	18822
% difference in All Crime 13/14 - 14/15				10.56%	0.93%	0.61%	-1.47%	-3.67%	-3.20%	-2.48%	-1.68%	-0.69%	-0.42%	-0.32%	-0.45%

#### To reduce Violence with Injury (excluding DA)

**SOME CONCERNS ABOUT PERFORMANCE IN THIS AREA (within 15% of target) - (2014/15 Target of not more than 1719 crimes)**

	Annual Data			2014/15 Performance											
	11/12.	12/13.	13/14.	Apr	May	Jun	Jul	Aug	Sep	Oct	Nov	Dec	Jan	Feb	Mar
Actual 2013 - 2014			1720	142	163	137	145	140	141	159	139	154	115	141	130
Actual 2014 - 2015				151	156	167	155	161	135	175	164	170	131	124	178
Target 14/15				141	304	441	586	726	867	1026	1165	1319	1435	1576	1706
Monthly Actual 13/14				142	163	137	145	140	141	159	139	154	116	141	130
Cum Actuals 13/14			1720	142	305	442	587	727	868	1027	1166	1320	1436	1577	1707
Cum Actuals 14/15				151	307	474	629	790	925	1100	1264	1434	1565	1689	1867
% difference in Actuals				6%	1%	7%	7%	9%	7%	7%	8%	9%	9%	7%	9%

**To Increase Reporting of Domestic Violence. (Crimes and Incidents)**

**SOME CONCERNS ABOUT PERFORMANCE IN THIS AREA (within 15% of target) - (2014/15 Target gap of more than 7103 crimes)**

	Annual Data			2014/15 Performance											
	11/12.	12/13.	13/14.	Apr	May	Jun	Jul	Aug	Sep	Oct	Nov	Dec	Jan	Feb	Mar
Actual 2013 - 2014			7103	487	574	585	713	679	573	597	542	640	544	533	635
Actual 2014 - 2015				542	572	625	662	564	528	519	544	587	480	488	476
Target 14/15				488	1062	1647	2360	3039	3612	4209	4751	5391	5935	6468	7103
Monthly Actual 13/14				487	574	585	713	679	573	597	542	640	544	533	635
Cum Actuals 13/14				487	1061	1646	2359	3038	3611	4208	4750	5390	5934	6467	7102
Cum Actuals 14/15				542	1114	1739	2401	2965	3493	4012	4556	5143	5623	6111	6587
% difference in Actuals				11%	5%	6%	2%	-2%	-3%	-5%	-4%	-5%	-5%	-6%	-7%

**To reduce the rate of Anti-Social Behaviour incidents**

**GENERALLY SATISFIED WITH PERFORMANCE - (2014/15 Target of not more than 10,298 Incidents)**

	Annual Data			2014/15 Performance											
	11/12.	12/13.	13/14.	Apr	May	Jun	Jul	Aug	Sep	Oct	Nov	Dec	Jan	Feb	Mar
Actual 2013 - 2014	14342	10291	10299	769	934	967	1134	981	857	897	806	765	698	615	877
Actual 2014 - 2015				808	882	1023	1056	915	982	850	755	682	639	642	831
Target 14/15				768	1702	2669	3803	4784	5641	6538	7344	8109	8807	9422	10299
Monthly Actual 13/14				769	934	967	1134	981	857	897	806	765	698	615	877
Cum Actuals 13/14				769	1703	2670	3804	4785	5642	6539	7345	8110	8808	9423	10300
Cum Actuals 14/15				808	1690	2713	3769	4684	5666	6516	7271	7953	8592	9234	10065
% difference in Actuals				5%	-1%	2%	-1%	-2%	0%	0%	-1%	-2%	-2%	-2%	-2%

**Increase the number of vulnerable victims of ASB supported by the ASB Victim Champion Service and Satisfaction rate of those who engaged with the ASB Victim Champion Service**

**GENERALLY SATISFIED WITH PERFORMANCE - (2014/15 performance measure of 300 vulnerable victims seen)**

	Annual Data			2014/15 Performance												
	11/12.	12/13.	13/14.	Apr	May	Jun	Jul	Aug	Sep	Oct	Nov	Dec	Jan	Feb	Mar	
<b>Increase the number of vulnerable victims of ASB supported by the ASB Victim Champion Service (target 300)</b>																
Actual 2013 - 2014				New Measure												
Actual 2014 - 2015				54	60	38	51	18	21	9	16	4	18.00	9.00	16.00	
Target 14/15				25	50	75	100	125	150	175	200	225	250	275	300	
Cum Actuals 14/15				54	114	152	203	221	242	251	267	271	289	298	314	
<b>Satisfaction rate of those who engaged with the ASB Victim Champion Service</b>																
Actual 2013 - 2014				New Measure												
Actual 2014 - 2015						96%	94%	99%	96%							
Target 14/15				90%	90%	90%	90%	90%	90%	90%	90%	90%	90%	90%	90%	

**To reduce Serious Acquisitive Crime**

**NO PERFORMANCE MEASURE BUT SOME CONCERNS ABOUT PERFORMANCE IN THIS AREA – MONITORING ONLY**

	Annual Data			2014/15 Performance											
	11/12.	12/13.	13/14.	Apr	May	Jun	Jul	Aug	Sep	Oct	Nov	Dec	Jan	Feb	Mar
Actual 2013 - 2014	2802	2244	1969	190	208	222	146	177	140	132	127	120	166	162	171
Actual 2014 - 2015				179	155	182	139	162	198	154	168	163	170	171	176
Cum Actuals 13/14				190	398	620	766	943	1083	1215	1342	1462	1628	1790	1961
Cum Actuals 14/15				179	334	516	655	817	1015	1169	1337	1500	1670	1841	2017
% difference in Actuals				-5.8%	-16.1%	-16.8%	-14.5%	-13.4%	-6.3%	-3.8%	-0.4%	2.6%	2.6%	2.8%	2.9%

The number of racist, disablist, homophobic and faith incidents reported and The % satisfied with outcome of reported racist, disablist, homophobic, faith & belief incidents

**GENERALLY SATISFIED WITH PERFORMANCE (2014/15 performance measure of more than 610 Incidents)**  
**GENERALLY SATISFIED WITH PERFORMANCE (90% satisfaction rate)**

	Annual Data			2014/15 Performance											
	11/12.	12/13.	13/14.	Apr	May	Jun	Jul	Aug	Sep	Oct	Nov	Dec	Jan	Feb	Mar
<b>The number of racist, disablist, homophobic and faith incidents reported</b>															
Cumulative average 13/14				51	106	144	192	247	300	347	390	444	496	551	603
Cumulative average 14/15		569	603	55	109	152	208	247	292	354	408				
Target required				51	102	152	203	254	305	356	407	457	508	559	610
<b>The % satisfied with outcome of reported racist, disablist, homophobic, faith &amp; belief incidents</b>															
Cumulative average 13/14				88.23%	88.23%	89.12%	89.61%	89.44%	89.45%	89.28%	89.75%	88.82%	88.73%	88.95%	88.86%
Cumulative average 14/15		89%	89%	86%	89%	90%	90%	90%	90%	90%	90%				
Target average				90%	90%	90%	90%	90%	90%	90%	90%	90%	90%	90%	90%



## 4. Performance on Key Strategic Recommendations from the 2013/14 Strategic Assessment

The following are the agreed key strategic recommendations for the Safer Plymouth Partnership for 2013/14:

1. Agree the following as priorities for 2014; Violence with Injury (excluding Domestic Abuse), Domestic Abuse, Anti-Social Behaviour, Hate Crime, Sexual Violence Reducing Re-offending and Serious Acquisitive Crime.	
2. Utilise partnership intelligence to monitor levels of Violence without Injury and Acquisitive crime (including Shoplifting), and respond to the increase in these crime types.	
3. A solution is found to securing/ mainstreaming activities that support the most vulnerable victims of anti-social behaviour i.e. Vulnerable Victims Champion	
4. All 'indicated' partner contributions need to be confirmed/ secured in order to deliver all elements of the enhanced/ increase Domestic Abuse service provision. Failure to do so will negatively impact on the service specification and result in a reduced service.	
5. Funding for continuation of SARC services need to be confirmed/ secured in order to deliver all elements of the current service and to increase the provision for children.	
6. Support and deliver the outcomes in Plymouth from Alcohol Strategy and Commissioning Plan given the impact of alcohol on each of the priorities outlined above.	
7. Continue with a proportionate programme of work to prevent violent extremism.	
8. Support the activities and priorities in the "Early Intervention and Prevention Strategy 2012-2015 For Children, Young People and Families" particularly those interventions that will have a positive effect in preventing and protecting young people from becoming involved in crime and risk-taking behaviour.	
9. Monitor the local impact of Welfare Reform and ensure that partners' plans and interventions are supported. That minimise the impact on individuals and families that may result in/lead to increases in criminal activity, for example serious acquisitive crime, domestic abuse, violent crime and substance misuse.	
10. Maintain the integrated Police/Probation model by retaining the IOM team for prolific re-offenders and establishing a co-located Multi Agency Public Protection Team	
11. Ensure that Safer Plymouth responds to the Police and Crime Commissioner's process for a 'self-assessment' in a way that ensures and maintains the offer to Plymouth for 3-year funding as outlined in the Police and Crime Commissioner's Commissioning Plan. To also maintain a strong relationship with the Police and Crime Commissioner that continues to ensure the prioritisation of Plymouth regionally.	
12. Continue to play an active role in supporting the work of the Devon and Cornwall Police and Crime Panel (currently hosted by Plymouth) and support Plymouth City Council in reaching a decision by March 2014 as to whether to continue to host, and in light of further funding announcements from the Home Office.	

